 Tesla, Inc. Service Bulletin		<i>Install O-ring on Trunk Power Strut</i>	
SB-22-11-001 July 28, 2022			
Classification		Section/Group	Mobile Service
Campaign Bulletin		11 - Closures	Can Perform (where permitted)
Model Year	Model	Country/Region	Version
2021	Model 3	All	All
<small>The model(s) and model year(s) listed are a general approximation of the affected VIN list. Refer to the VIN/Bulletin Tracker or Customer/Vehicle profile to determine applicability of this bulletin for a particular vehicle.</small>			

Campaign Bulletin: This campaign bulletin addresses a known non-safety-related condition and provides recommended technical diagnosis and repair procedures. Apply this procedure to all vehicles in the affected VIN list.

Condition

Certain Model 3 vehicles equipped with a power operated trunk lid may experience water ingress into the trunk power strut, eventually leading to the power strut becoming inoperative.

Correction

Install an O-ring on the trunk power strut. If an O-ring is already found present, replace it with a new one.

Correction Description	Correction	Time
SB-22-11-001 Not Applicable	S012211001	0.00
Install Or Replace O-Ring On Trunk Power Strut	S022211001	0.05

	Part Number	Description	Quantity
If needed	1831785-00-A	O-RING, EPDM, M3 POWER STRUT	1
	This part number was current at the time of publication. Use the revision listed or later, unless otherwise specified in the Parts Catalog .		
Shop supplies	IPA wipes		

Procedure

1. Open the trunk.
2. Release the C-clip that attaches the upper end of the trunk power strut to the trunk lid, and then separate the power strut from the trunk lid ball stud (Figure 1).



Figure 1

3. Inspect the LH trunk power strut for the presence of an O-ring on top of the strut bellows (Figures 2 and 3). If an O-ring is found present, remove and discard it.

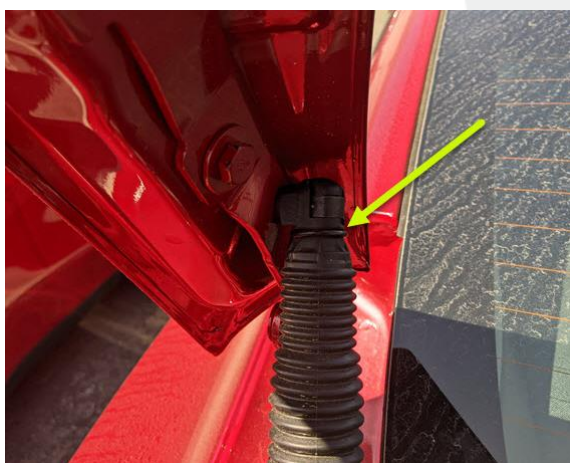


Figure 2



Figure 3

4. Install an O-ring onto the power strut: roll the seal over the top of the power strut and fit it between the bellows and the ball stud socket (Figure 4).

⚠ CAUTION: Do not install the O-ring over the top of the bellows (Figure 5).

⚠ CAUTION: Make sure that you install the correct O-ring with part number 1831785-00-A.



Figure 4 – O-ring seated correctly



Figure 5 - O-ring seated too low

5. Clean the ball stud on the trunk lid with an IPA wipe, and then reinstall the power strut to the ball stud.

⚠ CAUTION: Make sure that the power strut is securely attached to the ball stud before continuing to the next step.

6. Close the power trunk from the power trunk switch (Figure 6).



Figure 6